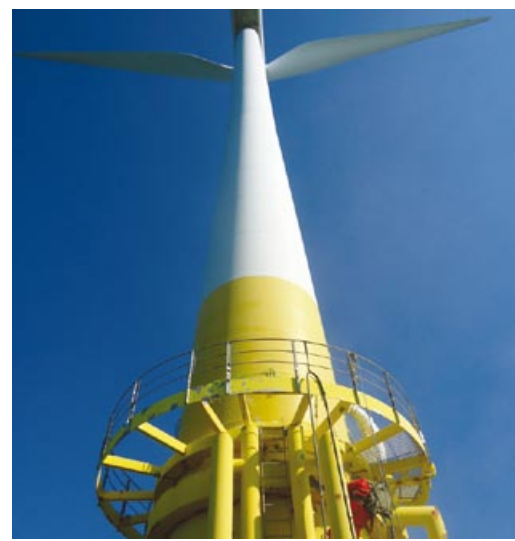


Offshore Wind Turbine
Maintenance Specialist



Monopile

Case Study



Project Information

Scroby Sands Wind Farm is an offshore wind farm located 1.5km off the Norfolk coast. The wind farm consists of 30 Wind Turbine Generators each rated at 2MW, mounted on monopile foundations. The development has been operational since 2004 and is one of the UK's first commercial offshore wind farms located at Scroby Sands in Great Yarmouth, owned and managed by E.ON.

ABFAD Ltd successfully won this three year contract to refurbish the monopile steelwork from grating elevation to sea level deploying rope access techniques.

Work consists of;

1. Removing gratings and davit arms in stages
2. Blasting steelwork structure to SA2.5 standard to remove corrosion, profiling existing coating and feather back all edges prior to coating application
3. Spray apply protective coating
4. Reinstate gratings and davit arms

Phase 1

2012 refurbish area of steelwork as far as Monopile collar section below grating support steelwork.

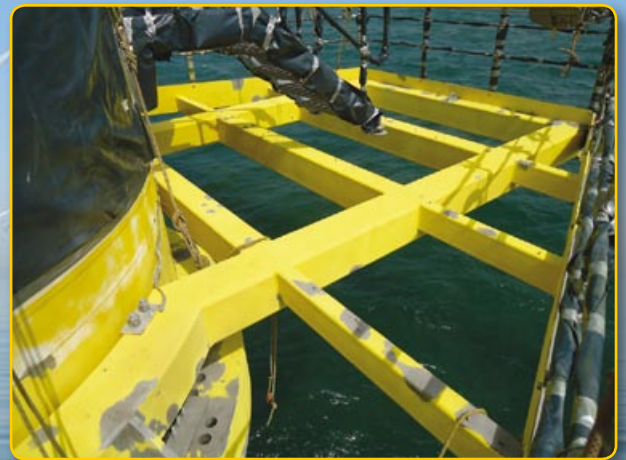
Phase 2

To refurbish all steelwork down from below collar section to sea elevation.

Work has been performed with ABFAD Ltd unique magnetic positioning aid clamp inconjunction with rope access equipment. The magnetic clamps assist rope access blaster sprayers to hold their position whilst suspended from ropes reducing standard time norms when performing their work activities to the highest quality.



Removal of gratings and davit arms in preparation for grit blasting.



All corrosion removed to blast standard SA 2.5 and sound paint profiled to take new coating



Grit blasting performed using highly skilled roped access techniques



New protective coating, airless sprayed applied to the required thickness.



Workboat alongside monopile carrying all necessary tools and equipment to perform blasting, coating and mechanical works.



New protective coating applied to underside of walkway.



New protective coating applied to top sides of walkway.



Re-install grating and davit arms.



Re-install grating.



Phase 1 refurbishment to walkway and underside of monopile complete. Phase 2 will take monopile refurbishment from underneath top collar section below grating down to sea level.