



Integrity, Inspection & Testing
Integrated Access Solutions
Construction & Maintenance Packages





Intelligent Safety
Focused Solutions



ABOUT VERTECH /

Introduction	2
HSE Policy	3
Core Values	4
Vertech People	5

SERVICES /

Inspection & Testing	6/11
Integrity Engineering	12/13
Lifting Equipment	14/19
Access Solutions	20/23
Construction, Maintenance & Repair	24/27
Training	28/29
Wind Power Services	30
Geotechnical	31
Global Energy Group	32





ABOUT VERTECH

BASED IN WESTERN AUSTRALIA, VERTECH SUPPLY SPECIALIST ACCESS, INSPECTION AND MAINTENANCE PACKAGES TO THE INTERNATIONAL ENERGY INDUSTRY.

Built on a foundation of extensive oil and gas experience we apply world's best practice to consistently excel in a highly competitive market.

As a company that prides itself on trading with integrity our emphasis is on supplying high value, quality services. We combine industry knowledge with cutting edge technology to provide intelligent solutions to technically challenging problems.

PART OF THE GLOBAL ENERGY GROUP
GEGROUP.COM

HSE POLICY

At Vertech our most important value, above all other business objectives, is care for each other and the environment. Accordingly, the highest standards of health, safety and environmental responsibility are executed throughout the business and in the delivery of our products and services.

We are committed to continuous improvement in HSE performance with a target of zero harm to people and the environment.





CORE VALUES

Building 360° Trust

Demonstrating care, honesty and fairness with all stakeholders.

Living TEAM Global - Global Teams

Working together for success without compromising the unique strength of each business unit.

Being People Pioneers

Supporting, developing and inspiring our people to succeed both personally and professionally.

Delivering Innovation, Safety, Quality and Service

Always delivering to the highest standard and going beyond stakeholder expectations.

VERTECH PEOPLE

Our people care about the work they do because we care about them.

Vertech personnel are selected on the basis of their personality, safety culture, trade competency and experience. All Vertech employees undergo comprehensive behavioral safety training, leadership coaching and ongoing trade competency testing and training.

We pride ourselves on our ability to create excellent teams of professional technicians who work well together to safely complete quality driven projects.



INSPECTION & TESTING

IT IS ESSENTIAL TO ENSURE PLANT AND EQUIPMENT ARE IN GOOD CONDITION AND FIT FOR PURPOSE.

Failure of a component can result in human and financial loss and environmental costs. Veritech offers Asset Integrity Management, Inspection and Testing Services. We conduct a wide range of inspection services and advise on the most appropriate testing technique for a particular work-scope, such as:

- Close visual inspection
- Non destructive testing
- Thermal imaging
- Corrosion mapping
- Coating inspection
- Remote camera inspection

NON DESTRUCTIVE TESTING

Non Destructive Testing (NDT), particularly when used in combination with Rope Access, is generally possible whilst the component/structure is in-service thus reducing and often eliminating the need for expensive shutdowns.

The NDT disciplines offered include:

- Magnetic Particle Inspection (MPI)
- Dye Penetrant Inspection (DPI)
- Ultrasonic Thickness & Flaw Testing (UT)
- Phased Array Ultrasonic Inspection (PA)
- Eddy Current Inspection (ECI)
- Time of Flight Diffraction (TOFD)



WWW.VERITECH.COM.AU



PROCESS PLANT & EQUIPMENT

Vertech offers a broad suite of NDT services to provide a complete package for the inspection of process plant and equipment in Refineries, Power Stations, and Offshore Oil & Gas Facilities.

Inspections are performed to internationally recognised standards, including API 510/570, by highly experienced qualified inspectors.

Using the latest range of Remote Inspection Camera Systems, personnel entry into confined spaces can be dramatically reduced, whilst the application of Rope Access and/or Alternative Access Systems allows safe unrestricted access to difficult locations with minimal impact on plant operations.

Our proven track record with large shutdown scenarios allows us to assist with detailed planning to ensure inspection activities are completed on time and to an impeccable standard. Using the advanced inspection technologies such as Phased Array Ultrasonics, Eddy Current and ACFM allows rapid inspection without removing protective coatings on:

- Pressure vessels
- Process piping
- Corrosion mapping





CLASS SURVEYS

We have a thorough knowledge of classification requirements and the structure of offshore oil & gas facilities.

Classification societies such as ABS (American Bureau of Shipping), DNV (Det Norske Veritas), Germanischer Lloyd and Lloyds Register have for many years relied on external rope access specialists to assist the attending surveyor during the class inspection of ships and offshore structures. Our experience gained from working with various classification societies on many different types of facilities allows us to plan and execute surveys that are completed safely, to a high standard and with minimal disturbance to onboard operations.

We have been audited and certified by ABS and Lloyds Register as an external specialist and work closely with their surveyors in providing the following services to complete survey requirements:

- Non destructive testing techniques
- Remote camera inspection systems

Vertech is also able to assist in rectifying outstanding class issues with our maintenance and repair capabilities which include structural steel and piping renewals.

STRUCTURAL SURVEYS

Inspection of structures with difficult access is often neglected due to the prohibitive costs involved.

Rope Access and Alternative Access Systems allow safe rapid access to parts of a structure to carry out a variety of tasks including structural and coating inspection which will allow preventative maintenance to be carried out before the integrity of the structure is compromised.

The range of inspections available includes:

- Close visual inspection
- Bolt torque testing
- Weld inspection
- Coating inspection
- Concrete inspection (cover meter testing, core sampling, etc)

These inspection services and a wide range of maintenance and repair services are carried out using Rope Access and Alternative Access Systems on a variety of structures including:

- Offshore oil & gas facilities
- Towers and derricks
- Wind turbines
- Bridges
- Dams
- Chimney stacks
- Shipping including tankers and bulk carriers

COATING INSPECTION

- NACE and ACA accredited inspectors
- Adhesion testing
- Application monitoring
- Dry film thickness measurements

VISUAL INSPECTION

- Close visual inspection
- Remote camera survey
- Borescope
- Thermography



INTEGRITY ENGINEERING

AN EFFECTIVE ASSET INTEGRITY MANAGEMENT SYSTEM EMPLOYS A HOLISTIC, SYSTEMATIC APPROACH THAT ENSURES ASSETS ARE MAINTAINED FIT FOR PURPOSE THROUGHOUT THEIR LIFECYCLE.

This ensures assets are able to perform their required function effectively and efficiently whilst minimising unscheduled shutdowns, risks to personnel, plant and the environment. This in turn ensures organisations are able to meet all statutory, regulatory and corporate standards, objectives and obligations.

Vertech assists clients in managing their assets by applying best practice engineering principles to develop bespoke solutions. From high-level corporate strategies through to detailed engineering analysis, Vertech have the capability to provide support at all stages of the integrity management cycle.

STRATEGIC PLANNING

- Integrity management systems
- Policies & objectives
- Strategies
- Plans (integrity, inspection, corrosion etc.)
- Methodologies
- Procedures

IMPLEMENTATION

- Organisational structures
- Training & awareness
- Documentation & data management systems
- Risk management (CRA, RBI etc.)
- Inspection planning & implementation
- Condition monitoring
- Corrective action (repair, maintenance etc.)

ASSESSMENT

- Failure/incident investigation
- Engineering study (FFS, RCA etc.)
- System audit
- Data analysis and review
- Continuous improvement
- CMP/IMP review and update
- Data management



> LIFTING EQUIPMENT

PROVIDING COMPREHENSIVE LIFTING GEAR INSPECTION PACKAGES THAT PROVIDE COMPLIANCE WITH INTERNATIONAL STANDARDS.



CRANE INSPECTION

As part of our lifting equipment inspection service we offer crane inspections to API standards.

Using multiple NDT & Visual Inspection techniques complete structural integrity & compliance is assured.

Our inspectors have experience across a multitude of crane configurations and working alongside a wide variety of clients and classification societies such as ABS, DNV & Lloyds.

Crane inspections can be carried out by the same personnel as part of a complete lifting gear survey or as a stand-alone service with crane-specific inspection procedures if required and a full report package issued upon completion.



LIFTING GEAR INSPECTION

Using Rope Access Techniques rapid access can be gained to crane booms and pedestals, derricks, masts and anywhere that lifting equipment is located at heights.

Visual Inspection techniques and Load Testing are supplemented with a range of NDT disciplines including:

- Magnetic particle inspection
- Dye penetrant inspection
- Eddy current inspection
- Ultrasonic inspection including phased array

LOLER lifting gear surveys are completed safely and on time/budget by qualified experienced personnel. A lifting equipment database is delivered at the conclusion of every survey.

LIFTING & LIFTED INSPECTION

Our NATA accredited Lifting Division is dedicated to ensuring your equipment remains in compliance with all relevant standards.

We do not take this accreditation lightly and all of our inspectors are regularly audited ensuring the highest possible levels of competency.

We recognise the importance of providing prompt and efficient service and are aware of the implications of certification hold ups, which is why Vertech has invested in a computer generated reporting system, which enables reports to be generated within 48 hours of inspection. On-site generated reports can also be made if required.

Our lifting inspection service includes:

- Certified visual inspection of slings and rigging
- Certified visual inspection of baskets, containers and skids etc
- NDT of lifting points on baskets, containers and skids etc
- Certified visual inspections on new builds/modified units
- Conduct lifting/lifted equipment inspection and audits on offshore and onshore facilities



DROPPED OBJECT SURVEYS

Objects dropped from a height have resulted in many near misses, injuries and even fatalities.

A primary control measure to reduce dropped object potential is to carry out a complete dropped objects survey. The aim of these surveys is to remove loose items left over from construction or maintenance activities and to identify items that are at risk from becoming dropped objects in the future. At risk items are usually fitted with back-up devices during the course of the survey which ultimately results in a safer work place.

A complete register is produced at the conclusion of the survey and recommendations are made to close out any outstanding issues.

The DROPS programme also includes the provision of training material to assist in implementing safe work practices at heights.

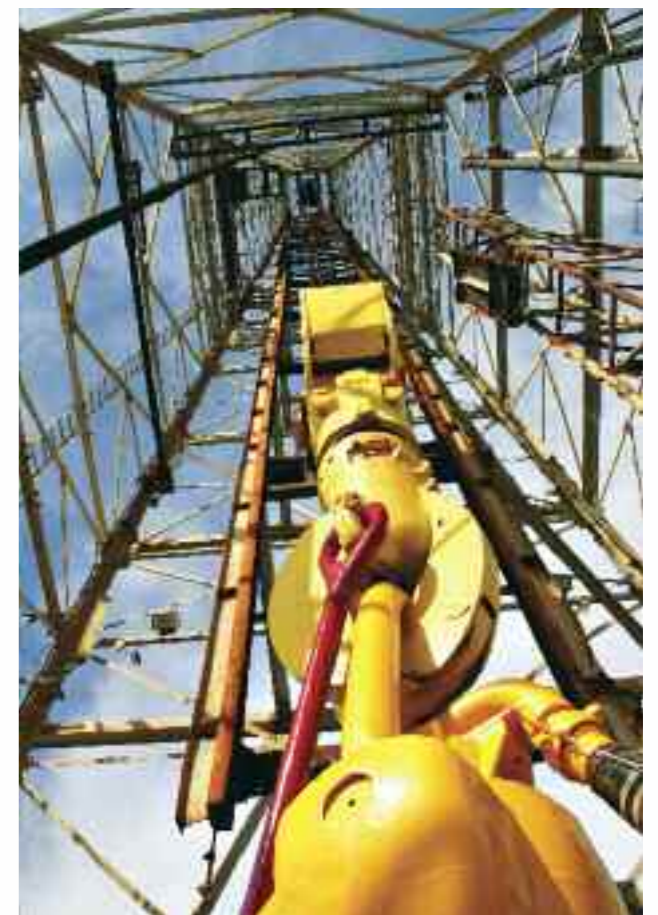
DERRICK SURVEYS

Vertech ensures that all sections of a derrick are systematically examined by dividing it into small, manageable areas for fully-focused inspection.

We conduct the work using our rope access qualified inspectors to carry out comprehensive close visual inspection of the derrick structure.

The thorough inspection process covers:

- Gin pole construction, including platforms, ladders, braces safety gates, connection plates, bolts and fasteners
- Upper and lower sections of the derrick stem, including all platforms, ladders, braces safety gates, connection plates, bolts and fasteners
- Dolly track, including all Y-frame support beams, beam clamps and joint couplings
- Dolly carriage guide rails, including upper, middle and lower sections
- Racking board area, including the support frames, fingers straightness, latches, fingerboard access and all bolts and fasteners
- Racking system, including all racking board supports, platforms and system supports
- Derrick outfittings, including wind walls and any pipework, such as vent lines or HP mud lines
- Derrick safety slings and lifting equipment
- Derrick structure footings
- Derrick structural general condition
- Percentage bolt tightness check - if required





ACCESS SOLUTIONS

PROVIDING FLEXIBLE, RAPID & RELIABLE METHODS OF ACCESSING THE WORK SITE. THESE INCLUDE INDUSTRIAL ROPE ACCESS, TENSION NETTING, DECKING & CUSTOM-MADE LIGHT-WEIGHT STAGING.

SAFETY NETTING

The building construction industry has utilised Safety Netting for many years to protect workers from falls at height. Vertech has developed engineered installation techniques complying with EN 1263 and implemented them for new applications for working over water and dropped object prevention.

Installing a safety net below the work zone not only provides a redundant fall protection measure when used with fall arrest equipment, it also eliminates the reliance on the standby rescue vessel and its associated costs and weather limitations. These can be used on offshore installations, jetties, bridges and any other structure where a secondary fall protection measure is required.

Where work-parties are required to work above each other, custom engineered dropped object protection nets can be installed to capture debris, tools and other dropped objects. These can also be used to wrap structures or objects which may have loose components that present a hazard.

ROPE ACCESS

Our Rope Access capabilities provide intelligent solutions to technically challenging projects and ensure a safe and economical approach to inspection, testing, maintenance, construction and installation requirements.

Industrial Rope Access has been in use around the world for over 20 years and with an unparalleled safety record has proven itself to be the safest method of working at heights.

Vertech technicians are highly experienced and multi-skilled resulting in fewer mobilisations and more efficient implementation and completion of projects.

We are an IRATA accredited Operator and Trainer company.

DECKING SYSTEMS

Decking is a suspended work platform designed for under-deck areas such as bridges, jetties and offshore facilities. It is quick to install and de-rig, offering substantial time/cost savings over traditional scaffolding. Its lightweight construction reduces manual handling whilst its high load carrying capability make it suitable for a variety of heavy-duty tasks. The ability to fully encapsulate the system makes it possible to create a controlled environment for blasting, painting, hot work and other hazardous activities.

Vertech has extensive experience working on a wide range of onshore and offshore assets. All projects are carefully evaluated on a case by case basis to ensure the safest and most efficient access system is employed for the intended workscope.



TENSION NETTING

Tension netting is another specialised service offered by Vertech. It is a dynamic access system that can be quickly erected and dismantled in areas where access would otherwise be limited to large scaffolding systems. The system is lightweight and minimally affected by wind or water loading.

Our technicians have extensive experience using tension netting systems which allow safe, easy and unlimited access to under-deck areas on ships, platforms, underside jetty structures, bridges, large tanks and most structures where a large span needs to be accessed.

With the netting in place, technicians can offer a large range of services including welding, cutting, steel renewals, blasting, painting and inspection.

Our technicians can install netting and fall arrest systems and provide assistance for projects where third party specialised expertise is required.

Tension netting systems used in conjunction with rope access/fall arrest techniques offers a safe, effective and economical approach to accessing difficult areas.

Please contact us for further information or to arrange a demonstration.

CONFINED SPACE ENTRY

Managing Confined Space work is one of Vertech's core business activities. We offer a complete Confined Space Entry service including Standby Rescue and supply of Breathing Apparatus, Gas Testing & Rescue Equipment. Our strong focus on safety, risk management and competence allows us to overcome the challenges of working in a demanding environment where the restrictive nature of access/egress, working at heights and complex rescue scenarios are ever-present.

Our knowledge and experience gained from working in a diverse range of CSE environments allows us to plan effectively and provide tailored solutions that are implemented by highly trained multi-disciplined teams. By utilising Industrial Rope Access, the need for staging or scaffolding is reduced or eliminated. The benefits of this include:

- Safety (less activity, falls and dropped objects are eliminated)
- Significant cost/time Reduction (sentry, access, standby rescue and work-scope completed by one team)
- Flexibility (rope access systems are reliable, adaptable, quick to install and can be de-rigged at short notice)
- Reduced impact on equipment & environment (damage to coatings and structure by scaffold eliminated)



CONSTRUCTION MAINTENANCE & REPAIR

THE SAFE AND FLEXIBLE NATURE OF INDUSTRIAL ROPE ACCESS ALLOWS RAPID AND SAFE ACCESS TO CHALLENGING LOCATIONS.

Vertech's multi disciplined Industrial Rope Access Technicians can perform a wide range of quality trade services.

Our Maintenance services are extensive and include:

- Technical rigging
- Cutting, welding & steel renewals
- Protective coating removal & application
- De-commissioning/demolition
- Mechanical fitting
- Installations/construction

The merits of utilising Industrial Rope Access is assessed on every project and where it is not suitable alternative methods will be recommended such as tension netting, light-weight staging or scaffolding.

TECHNICAL RIGGING

Rope Access and Rigging are complimentary disciplines sharing the same basic principles. Our experienced Rope Access Riggers can set up, move and remove rigging points efficiently and above all safely, without the use of scaffolding thus eliminating the risk of dropped objects and resulting in significant time/cost savings.

The versatile nature of Rope Access provides an intelligent solution to complex rigging problems involving multiple anchors and difficult access areas such as under-deck and confined spaces.

FITTING & MECHANICAL

A large range of fitting and mechanical services can be completed using Industrial Rope Access or Tension Netting including:

- Piping installations including risers, production piping etc
- Bolt tensioning and torquing
- Installation of hydraulic lines and systems
- Installation of ladders and platforms
- Cranes, lifting and hoisting equipment installation and maintenance
- Flare tip installations/change-outs



WELDING, CUTTING & BURNING

Vertech supplies rope access certified welders, pipefitters and boiler-makers to carry out Construction, Maintenance and De-commissioning works including:

- Oxy/acetylene cutting and air arc gouging
- Coded welding (AWS & ASME)
- Boiler making
- Pipefitting

Managing hot work in hazardous environments is a key competency which includes the use of Positive Pressure Habitats.

A team of specialist riggers complements our ability to offer turnkey solutions to large engineering installation projects.

ELECTRICAL SERVICES

The low impact, rapid and, above all, safe access methods provided by rope access are ideally suited to electrical installation and maintenance work. With our alliance partner Vertech can provide:

- Cable tray installation
- Cable pulling and glanding
- Fire & gas safety equipment installation, inspection and repair
- Installation of UV, IR and camera detection systems
- Installation of lighting systems
- Hazardous area inspections and surveys
- Installation of satellite/radar dishes and aerials
- Installation of lightning conductors/systems
- Onshore/offshore commissioning
- Thermographic surveys

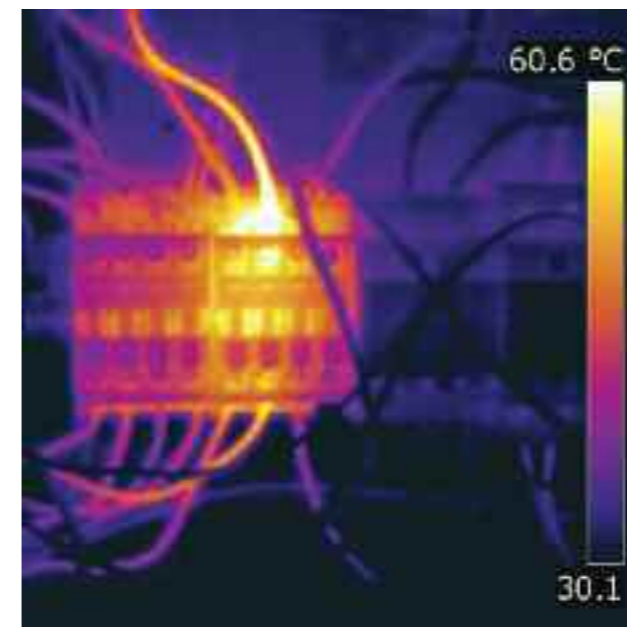
FABRIC MAINTENANCE

Fabric Maintenance is another discipline that goes hand-in-hand with Industrial Rope Access techniques. Vertech Rope Access Technicians can access difficult locations safely and efficiently to carry out a suite of fabric maintenance services from surface preparation to the application of protective coatings. Surface preparation techniques include; Ultra high pressure water blasting (UHP), grit blasting and mechanical tooling. All manner of protective coatings from 2 pack epoxy to Chartek fireproof coating can be applied using a variety of means.

100% containment of blast particulates and coating overspray can be achieved using the latest in Tension Netting and Suspended Platforms combined with filtration netting.

The use of Tension Netting is especially appropriate for Fabric Maintenance in under-deck spans including:

- Underside oil & gas installations
- Bridges
- Walkways
- Jetties
- Booms
- Ballast tanks



TRAINING

THROUGH CONTINUOUS TRAINING AND COMPETENCY ASSESSMENT WE GUARANTEE A LEVEL OF QUALITY THAT IS UNRIVALLED IN THE INDUSTRY

ROPE ACCESS

Vertech is an approved IRATA (Industrial Rope Access Trade Association) Trainer Company. We value the importance of providing the skills required to perform various rope access activities with the highest regard to safety. Vertech offers IRATA level 1, 2 & 3 courses as well as refresher and re-assessment training for all levels.

Rope Access Training courses are held at our new purpose built training facility, designed to simulate a realistic environment encountered in the field. Our Level 3 trainers are highly experienced technicians with many years of onshore and offshore work behind them. Their ability to pass on their knowledge whilst teaching the IRATA syllabus provides a well rounded course for all participants.

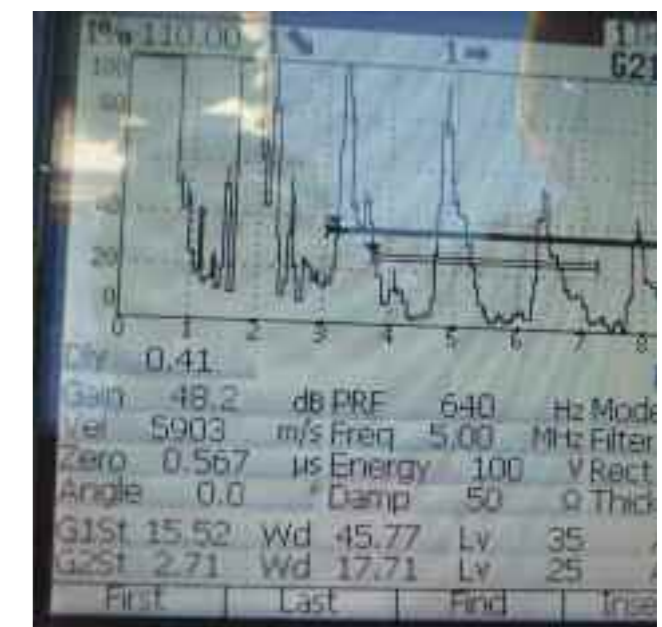
All assessments are carried out by an independent IRATA assessor.

COMPETENCY ASSURANCE TRAINING

In addition to the formally certified courses Vertech, also runs an internal training, competency and assessment program in order to ensure our personnel are fully competent to carry out their tasks. Subjects include NDT, Technical Rigging, Dropped Object Surveys and Structural Inspections.

NON DESTRUCTIVE TESTING

Vertech has partnered with one of Europe's most highly regarded NDT schools to provide local training and assessments to both the PCN (EN473/ISO 9712) and SNT certification schemes. Courses in all disciplines are held throughout the year.



WIND POWER SERVICES

We offer an integrated package of inspection, maintenance and repair services to the wind power industry. By offering the first Rotor Blade Inspection and Repair courses in Australia we are at the forefront of supplying skilled technicians to this emerging industry.



Rotor Blades

- End of warranty inspection, operational, lightning and transport damage & repair
- NDT & visual inspection of blades
- Repair & maintenance
- Lightning protection system check and resistance measurement
- Installation of vortex and stall-stripes

Nacelle

- NDT of all welds and metal components
- Fixed anchor point lift testing
- Pressure wash cleaning

Tower

- NDT of all weld and metal components
- Cleaning after oil and fouling, interior/exterior
- Coating maintenance
- Tower flange seals
- Bolt torque testing
- Installation and inspection/maintenance of fall protection systems

GEOTECHNICAL GROUND SUPPORT

Using our experienced personnel and proven safe access and rigging techniques, Veritech is the ideal partner to provide qualified rope access geo-tech teams for Ground Support Services including:

- Debris flow protection systems
- Rock mesh & netting
- Rock & cable bolting
- Catch barriers & fencing
- Scaling & de-vegetation
- Shotcrete application





GLOBAL ENERGY GROUP'S DEVELOPMENT INTO A LEADING SERVICE AND CONTRACTING COMPANY SUPPORTING THE INTERNATIONAL ENERGY INDUSTRY IS UNRIVALED AND HAS BECOME A GENUINE SUCCESS STORY.

Founded in 2005 and headquartered in Inverness, Global Energy Group is now one of the UK's leading employers, a major contributor to the national economy and a highly successful international business.

Our achievements have become a byword for growth, strength and success and our fast-track and focused solutions result in direct economic benefit to our customers.

Our core values and commitment to excellence, safety, the environment and the communities we work in remain paramount.

We continue to develop and ensure the next chapter of our story is even more successful.





Vertech

Unit 5, 103 Flora Terrace,
North Beach,
Western Australia, 6020

Tel: +61 8 9243 1203

Fax: +61 8 9243 1223

Email: info@vertech.com.au

vertech.com.au

**Vertech Logistics &
Training Centre**

Unit 4, 21 Harris Road,
Malaga,
Western Australia 6090

Tel: + 61 8 9249 1249

...working together for success

GEGROUP.COM