

## Introduction to the Wind Energy Sector

Are you aged 15 – 24?

Are you not in employment, education or training?

Are you interested in working in the renewable energy sector?

**If so, our funded programmes may be for you.**



# OVERVIEW OF THE WIND INDUSTRY

The wind industry is the world's fastest growing renewable energy source.

- The modern wind industry has its origins over 20 years ago, but only in the last decade has the international market taken off to the point where it has become the leading renewable energy technology.
- The wind industry is involved with the design, manufacture, construction, and maintenance of wind turbines.
- Although the wind industry is small compared to those of the conventional power generation technologies (e.g. nuclear), it is growing at a much faster rate.
- As the costs of generating energy fall and the urgent international need to tackle CO2 emissions and prevent climate change increases, the importance of the wind industry is a trend that is set to continue.

The programmes detailed on the following pages are part funded by the ESIF. The European Social Fund (ESF) is part of the European Structural and Investment Funds (ESIF) Growth Programme for England in 2014 to 2020. The European Commission (EC) owns these programmes and sets the Europe-wide ESF programme requirements. The EC governs this programme through its rules and regulations. The ESF is designed to increase sustainable economic and social work, and improving the skills of the workforce. More information can be found on GOV.UK.<sup>1</sup>

---

<sup>1</sup> Funding and Performance-management Rules 2014 to 2020 European Social Fund (ESF) Programme, SFA:London. Available at: [https://www.gov.uk/government/uploads/system/uploads/attachment\\_data/file/494599/ESF\\_2014-20\\_Funding\\_Rules\\_v2\\_January\\_2016.pdf](https://www.gov.uk/government/uploads/system/uploads/attachment_data/file/494599/ESF_2014-20_Funding_Rules_v2_January_2016.pdf)







## EMPLOYABILITY

### Aim:

This course has been designed to meet the needs of learners who wish to seek, gain and retain employment or progress to further learning which will allow learners to learn, develop and practice the skills required for employment.

### Content:

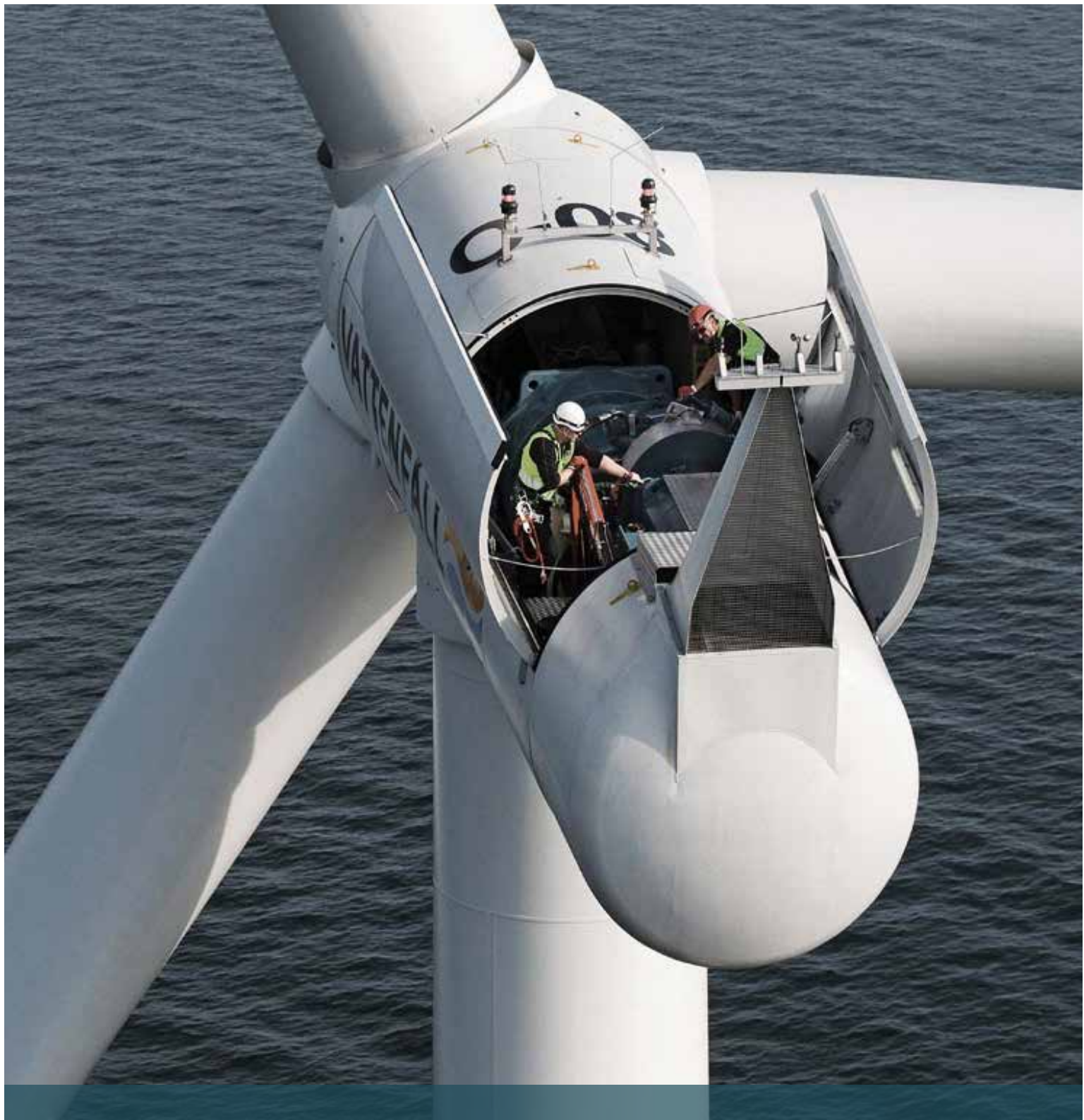
Learners will complete the following accredited units:

- Career Planning and Making Applications – To understand workplace values and employer and employee rights and responsibilities including the importance of Health and Safety in the workplace.
- Effective skills, qualities and attitudes for learning and work – To demonstrate positive qualities, attitudes and behaviours for learning and work, and to communicate and work effectively.
- Searching for a job – To understand how to make choices about the most appropriate ways to search for jobs.
- Conduct at work – To understand, demonstrate and reflect on some appropriate behaviour in the workplace.
- Speaking confidently at work – To develop the communication skills needed to build confidence with different people in the workplace in both formal and informal situations.
- Rights and responsibilities in the workplace – To understand the rights and responsibilities of employees and the role of Health and Safety.
- Understanding conflict at work – To understand why conflict occurs and what can be done to prevent it.

**Duration:** 3 weeks

### Progression:

Individuals who complete this course can progress into employment, traineeships, apprenticeships and further education.



## SAFE WORKING PRACTICES IN THE WIND TURBINE INDUSTRY

### **Aim:**

The aim of this course is to provide the essential mandatory skills and knowledge of safety in the wind turbine industry.

### **Content:**

Learners will complete the Global Wind Organisation (GWO) certification as part of this programme.

**Duration:** 4 weeks

### **Progression:**

Individuals who complete this course can progress into employment, traineeships, apprenticeships and further education.



## **CONTACT US TODAY...**

If you are interested in transitioning your skills into the wind energy sector, to find out how we can assist you.

CALL:

**0800 169 4426**

EMAIL:

**[EducationUK@maersktraining.com](mailto:EducationUK@maersktraining.com)**





**MAERSK**  
TRAINING

**MAERSK TRAINING**

2 Mercury Court, Orion Business Park, North Shields NE29 7SN

**Phone:** +44 (0)191 270 3220

**Email:** [EducationUK@maersktraining.com](mailto:EducationUK@maersktraining.com)

**Web:** [www.maersktraining.com](http://www.maersktraining.com)